

PD serie "S"

PD 70S max. power 5 kW

PD 7.4S max. power 6.3 kVA



**OPTIONAL
Version with
Site tow**



**Standard
version**

		PD 70 S		PD 7.4 S	
a.c. output	230 V	max.kW	5	3,5	
	50 Hz 1~	cont.kW	4,4	3	
power factor		cos ø	1	1	
a.c. output	400 V	max. KVA		6,3	
	50 Hz 3~	cont. kVA		5,5	
power factor		cos ø		0,8	
fuel starting		Diesel electric			
alternator		synchronous			
engine		Yanmar L100 AE			
cooling system		air			
displacement	c.c.	406			
n° cylinders		1			
prime power	HP	8,8			
R.P.M.		3000			
fuel tank capacity	lt.	10,5			
¾ load operating hours	h	7,5		7,5	
sound power level	L _{WA}	97			
acoustic pressure at 7 mt.	dB(A)	72			

**Standard
version**

DIMENSIONS	L	815	mm
	W	560	mm
	H	730	mm
WEIGHT		150	kg

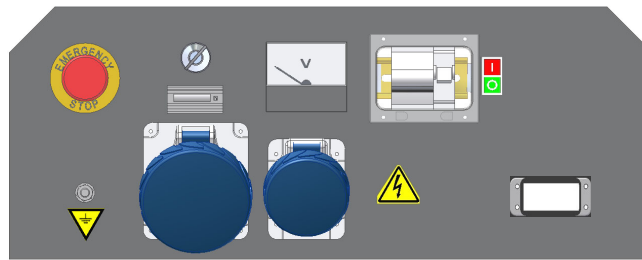
**Version with
Site tow**

DIMENSIONS	L	985	mm
	W	780	mm
	H	830	mm
WEIGHT		170	kg

CONTROL PANELS

Monophase standard manual control panel

- Start/stop key
- Voltmeter
- Hourmeter
- Emergency stop button

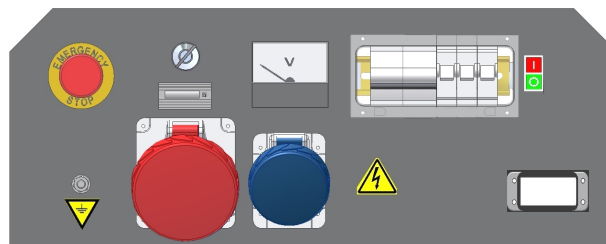


- Circuit breaker
- differential protection for sockets
- Connector for automatic control panel

- No. 1 EEC socket 32 Amps 2P+T 230V
- No. 1 EEC socket 16 Amps 2P+T 230V

Treephase standard manual control panel

- Start/stop key
- Voltmeter
- Hourmeter
- Emergency stop button



- Circuit breaker
- differential protection for sockets
- Connector for automatic control panel

- No. 1 EEC socket 16 Amps 3P+T 400V
- No. 1 EEC socket 16 Amps 2P+T 230V